



EZ-3 USX HD

Supplemental Owner's Manual



CONGRATULATIONS!

Congratulations and welcome to the Sun Seeker family! You have selected one of the most comfortable and advanced recumbents on the market. Please read this manual before riding your Sun Seeker Recumbent. In this manual you will find that we cover the basics for setting up and understanding your new recumbent.

IMPORTANT:

This manual is only a supplement to the main Recumbent Bicycle/Tricycle Owner's Manual. Read it before you take the first ride on your new recumbent bicycle/tricycle, and keep it for reference.

NOTE:

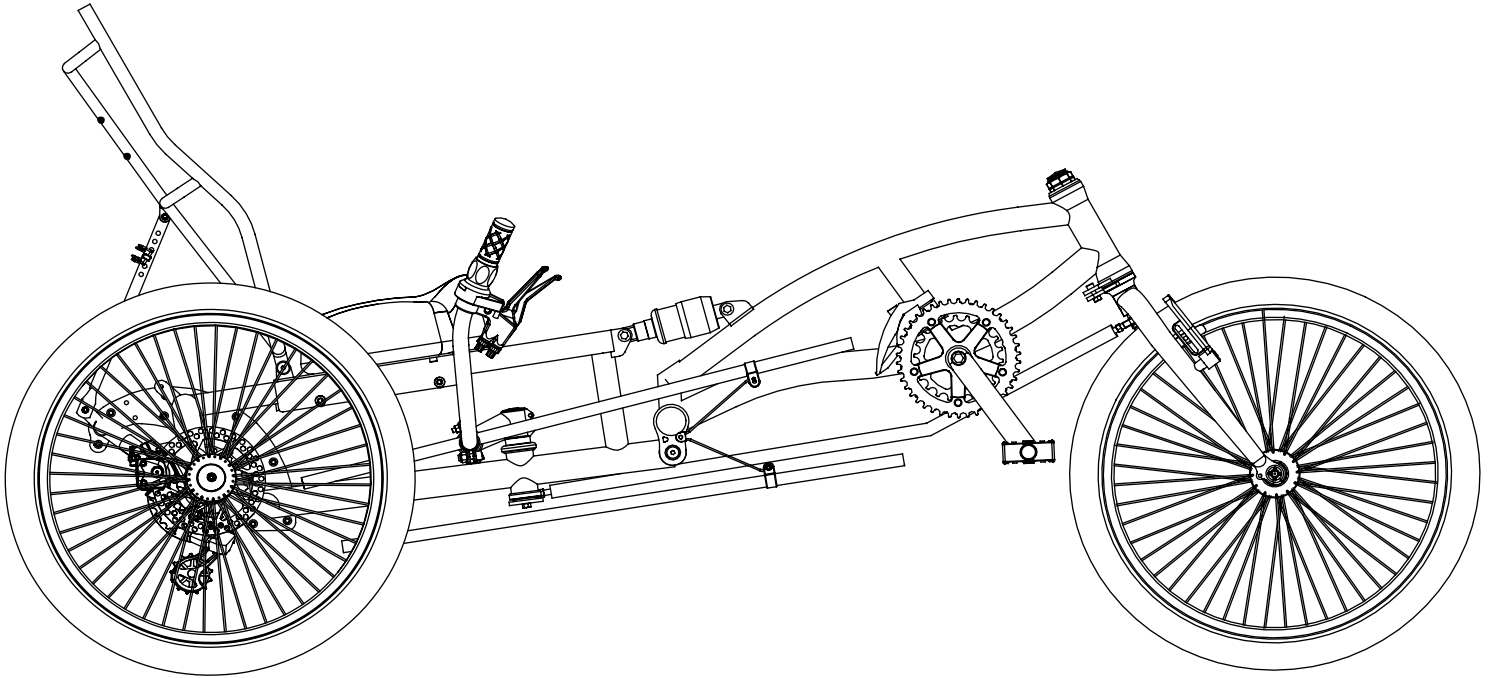
This manual is not intended as a comprehensive use, service, repair or maintenance manual. Please see your dealer for all service, repairs or maintenance. Your dealer may also be able to refer you to classes, clinics or books on bicycle use, service, repair or maintenance.

EZ-3 USX HD Specifications

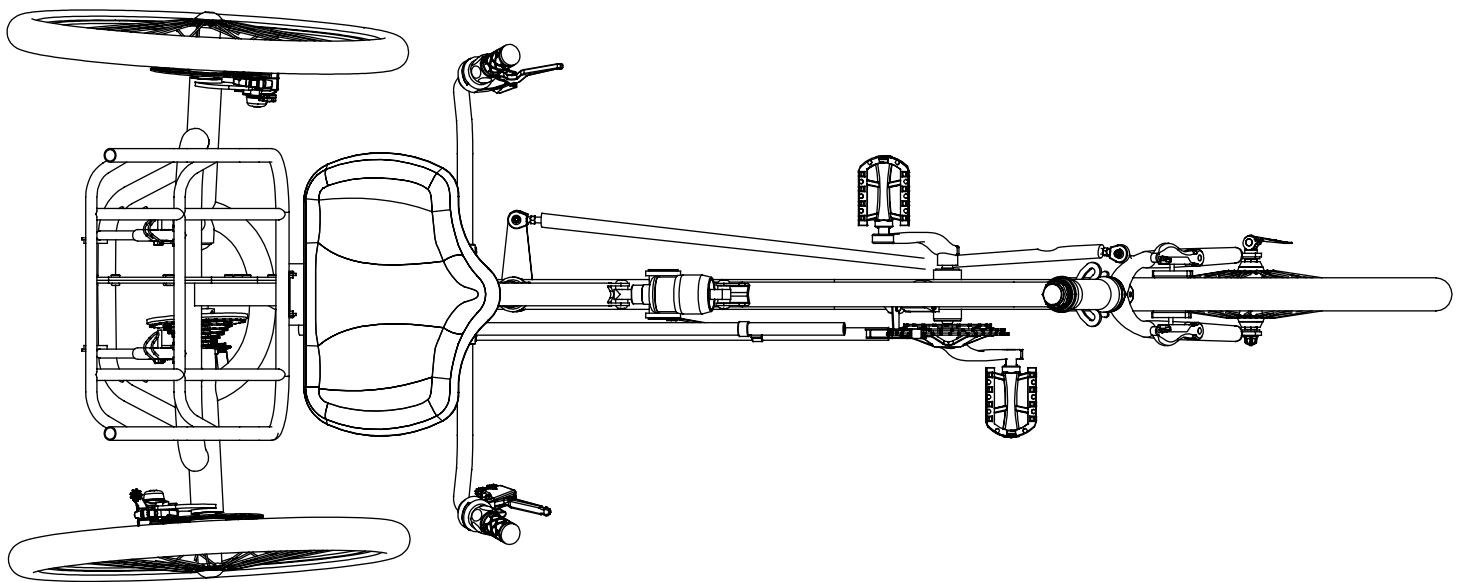
Model:	EZ-3 USX HD
Style:	Delta Trike
Frame Material:	Custom Steel, TIG Welded
Fork Material:	High Tensile Steel
Handlebar Material:	Steel
Steering System:	Under Seat
Seat Type:	Two-Piece with Cool Back Seat Mesh
Wheelbase: Overall Length:	59.5" (151cm)
Overall Length:	78" (198cm)
Width:	32" (81cm)
Bottom Bracket Height:	16" (41cm)
Seat Height:	18" (45cm)
Weight:	65 lbs.
X-Seam :	36" - 47" (91-119cm)
Weight Limit:	400 lbs.
Headset:	Semi-Integrated Steel
Drive Type:	21-Speed Deraillieur
Pedal Type:	Platform
Crankset:	Alloy 170mm 52-42-30t
Bottom Bracket:	Sealed Cartridge Square Taper
Chain Type:	KMC Z-51
Front Deraillieur:	Microshift Dual Pull for 31.8mm Seat Tube
Rear Deraillieur:	Sram X3
FW/Cassette Range:	7-Speed SunRace 14-34
Shifter Set:	Sram Grip Shift
Brake Levers:	Locking Linear Pull
Brake Caliper Front/Rear:	Promax Linear Pull / Dual Promax DSK-400 Mechanical Disc w/160mm Rotors
Rims / Spokes:	Alloy Double Wall / Stainless Steel / 48 Hole
Tires / Size:	Maxxis Hookworm 20 x 1.95" 100psi
Water Bottle Cage Mounts:	Dual Seat-Back Mounts
Note: Specifications subject to change without notice.	

EZ-3 USX HD Reference Views

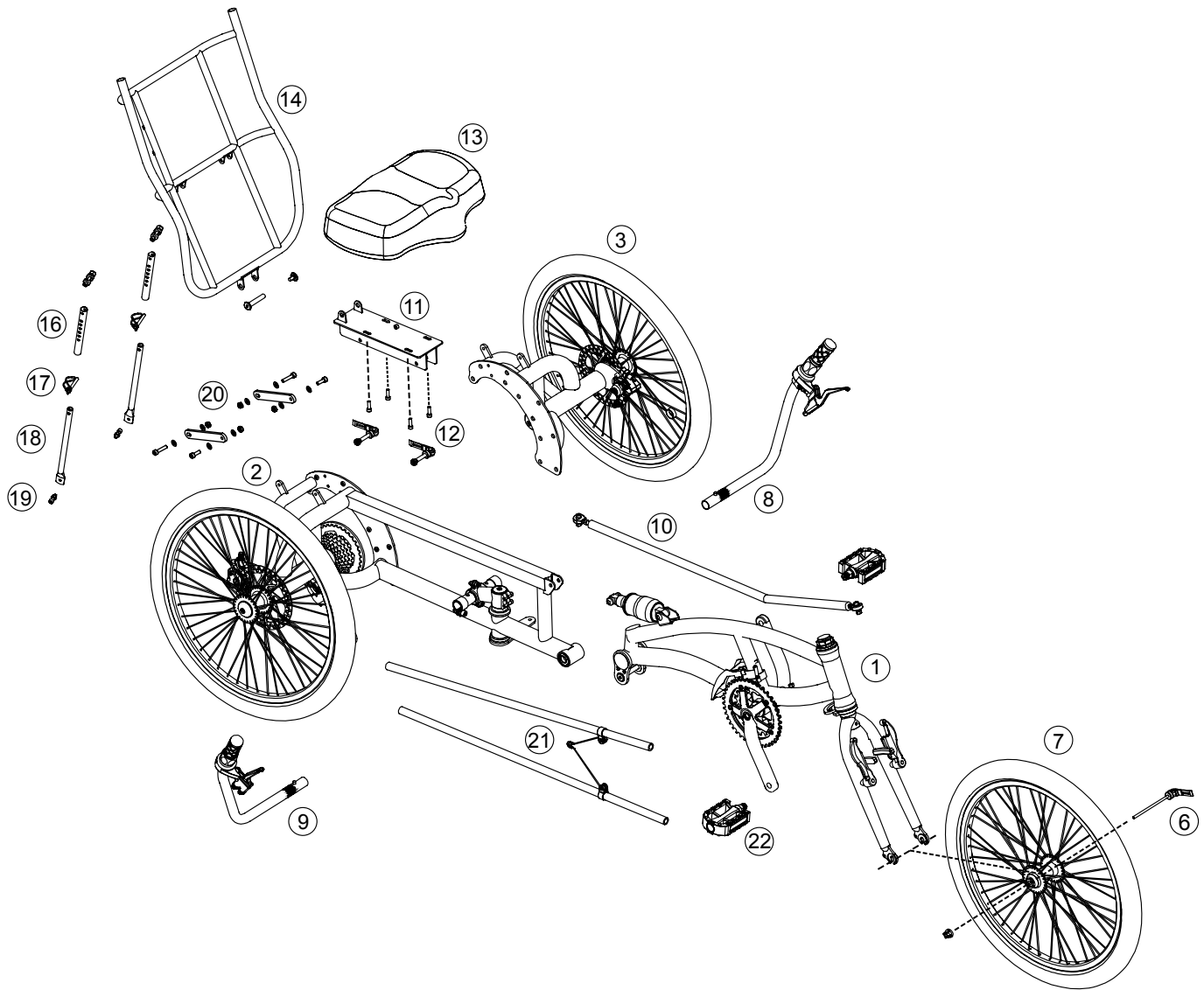
Side View



Top View



EZ-3 USX HD Assembly Reference



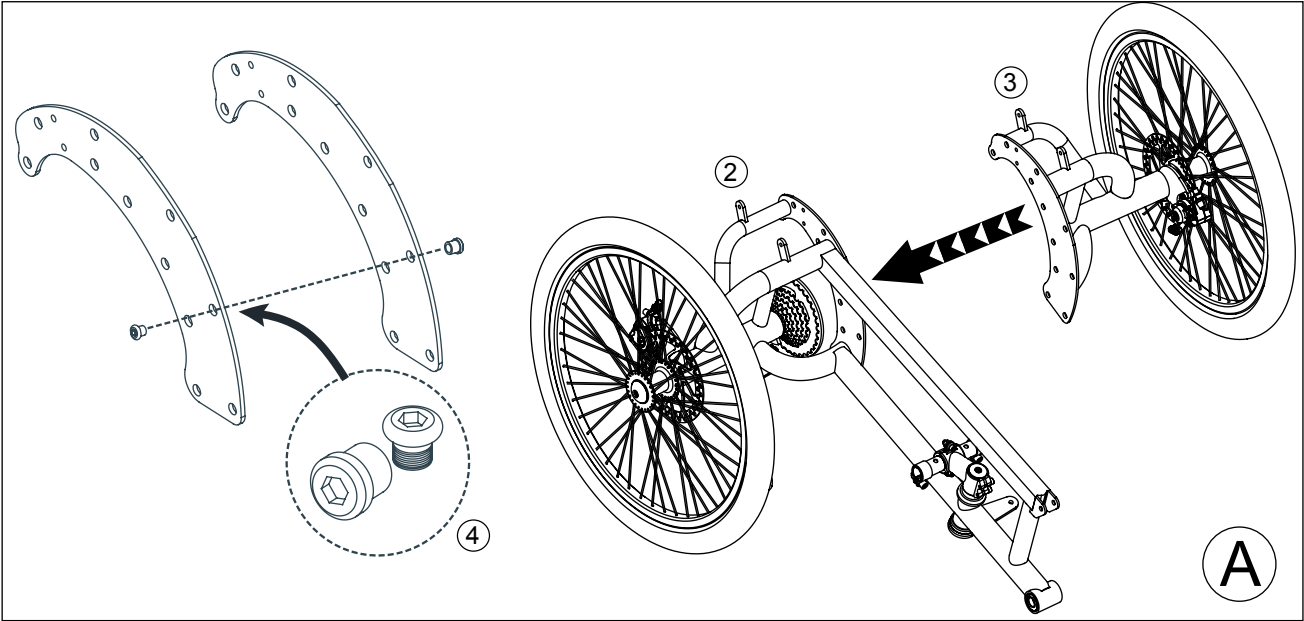
EZ-3 USX HD Parts List

ITEM	DESCRIPTION	QTY
1	Main Frame Assembly	1
2	Rear Unit Right Side Assembly	1
3	Rear Unit Left Side Assembly	1
4	Rear Unit Hardware Set (Not Pictured)	1 set
5	Frame Pivot and Shock Hardware Set (Not Pictured)	1 set
6	Front Wheel QR (M5 x 130mm)	1
7	Front Wheel Assembly	1
8	Left Handlebar Assembly	1
9	Right Handlebar Assembly	1
10	Steering Link	1
11	Seat Mount	1
12	Seat Mount Hardware Set (4x M5x20mm bolts and 2x QR M6x65mm)	1 set
13	Saddle	1
14	Seat Back Frame	1
15	Seat Mesh (Not Pictured)	1
16	Upper Seat Strut (15.8 x 150mm)	1 pair
17	Seat Strut Pins	1 pair
18	Lower Seat Strut (19.1 x 445mm)	1 pair
19	Seat Strut Hardware Set (2x upper bolts/nuts/washers, 4x 1/2 moon plastic washers, 2x lower bolts/nuts/washers)	1 set
20	Seat Strut Tab Brace Set (2x braces, 4x bolts/nuts/washers)	1 set
21	Chain Tube Assembly	1 pair
22	Pedals (9/16")	1 pair

Assembly Guide

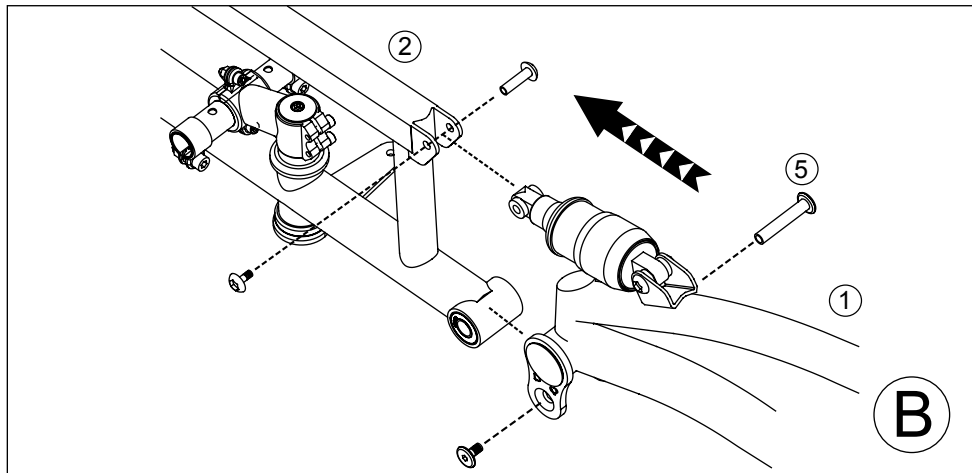
Rear Frame Installation

Install #3 Rear Unit Left Side Assembly onto #2 Rear Unit Right Side Assembly using #4 Rear Unit Hardware. Tighten rear unit hardware evenly. See Figure A.



Main Frame Installation

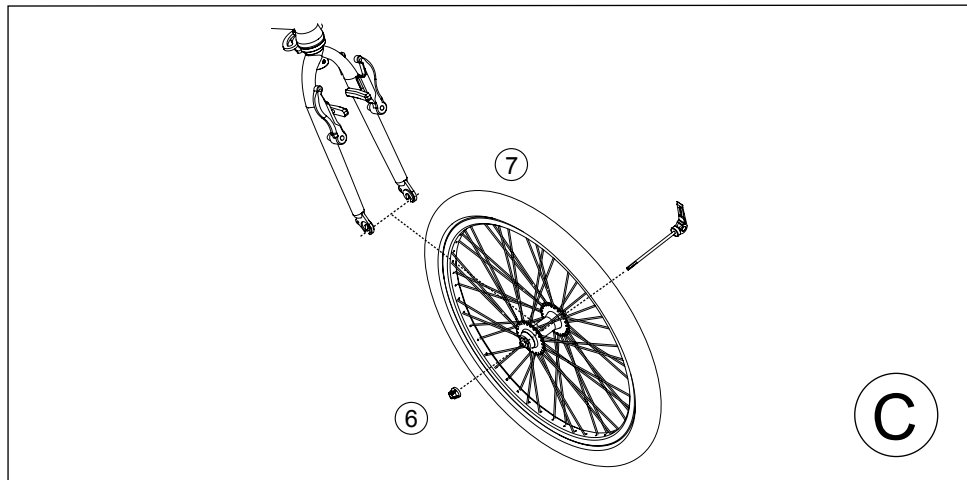
Install #2 Rear Unit Right Side Assembly to #1 Main Frame Assembly using the #5 Frame Pivot and Shock Hardware Set. Lightly grease pivot and shock bushing. Tighten main pivot bolt to 12Nm (106 in Lbs.) See Figure B.



Front Wheel Installation

Install #7 Front Wheel Assembly into front fork dropouts. Install #6 Front Wheel Quick Release and tighten securely. See Figure C.

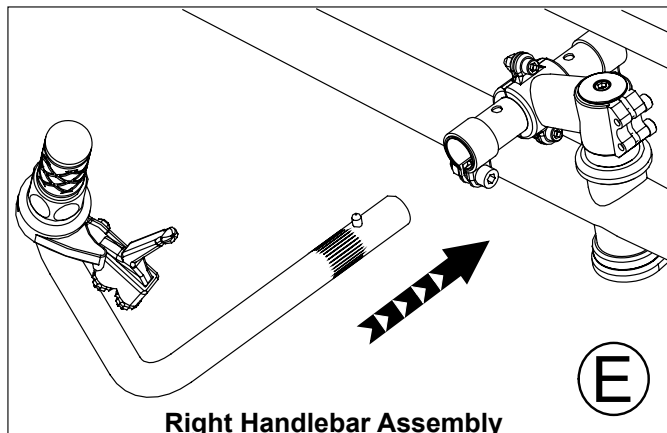
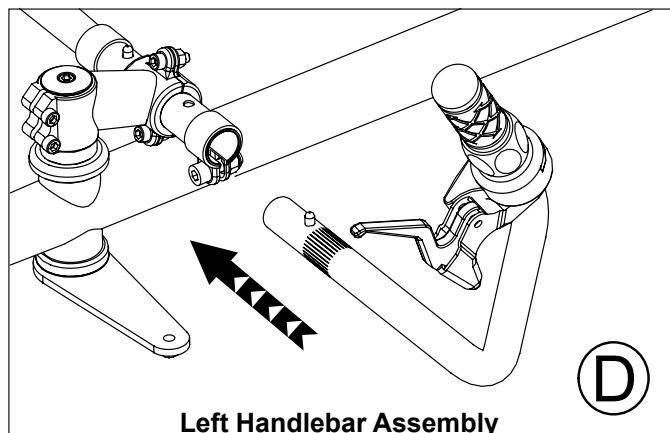
NOTE: Refer to Sun Seeker Recumbent Bicycle / Tricycle Owner's Manual for proper quick release operation.



Handlebar Assembly Installation

Install #8 Left Handlebar Assembly into handlebar stem located beneath the #2 Rear Unit Right Side Assembly, insert fully in order to engage handlebar safety pin into stem. See Figure D.

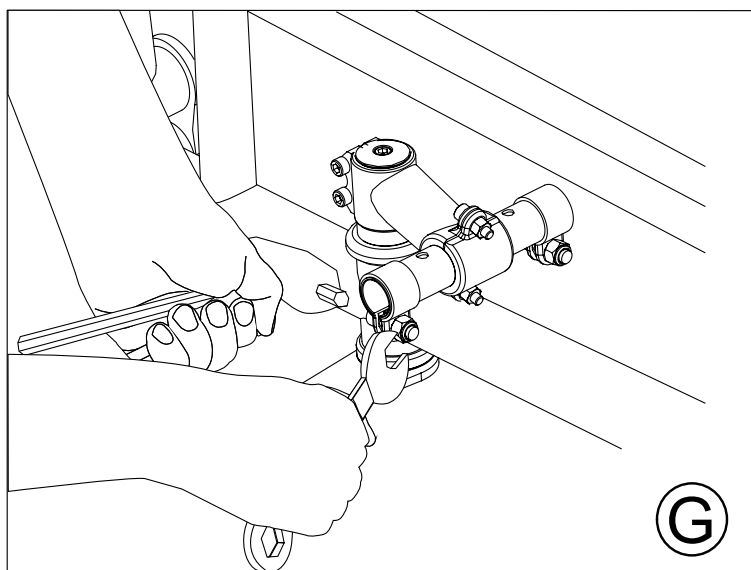
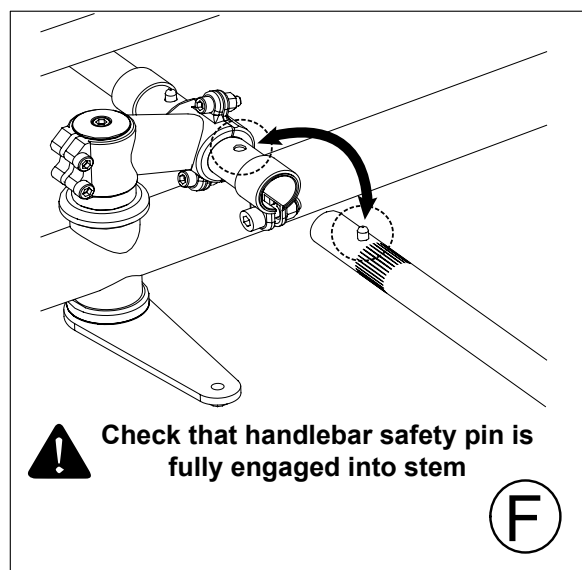
Install #9 Right Handlebar Assembly into handlebar stem located beneath the #2 Rear Unit Right Side Assembly, insert full in order to engage handlebar safety pin into stem. See Figure E.



Tighten handlebar stem onto #8 and #9 Handlebar Assemblies using supplied hardware. See Figure G.

Once handlebar assembly positions are set you can now adjust the brake and shift controls for comfort. Secure shift and brake cables along handlebar assembly using provided zip ties.

NOTE: DO NOT extend handlebar assemblies past their marked safety line. Handlebar safety pin must be fully engaged into stem. See Figure F.

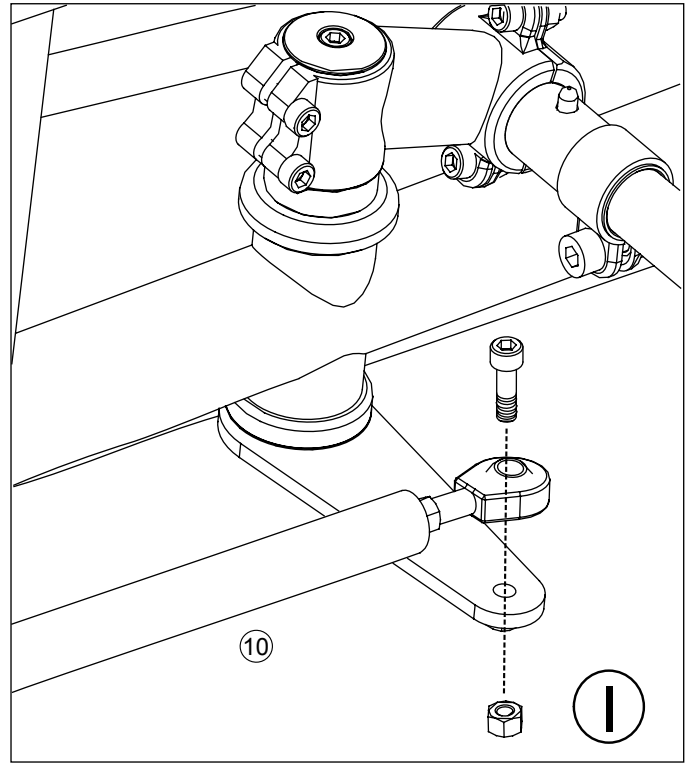
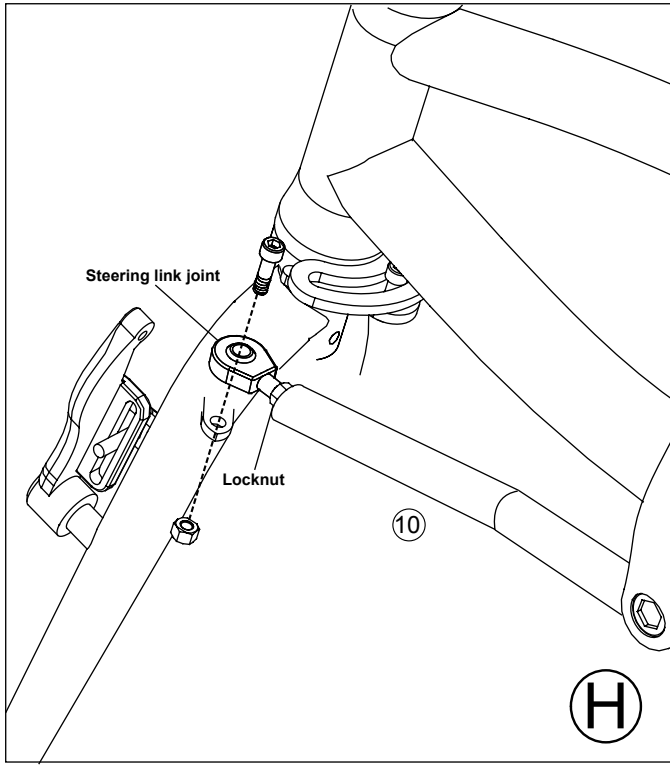


WARNING: Make sure once you have made all your handlebar, stem and control adjustments that you do not have any leg, knee or tire interference with the handlebar or controls. Failure to do so may result in loss of control resulting in a serious or fatal accident.

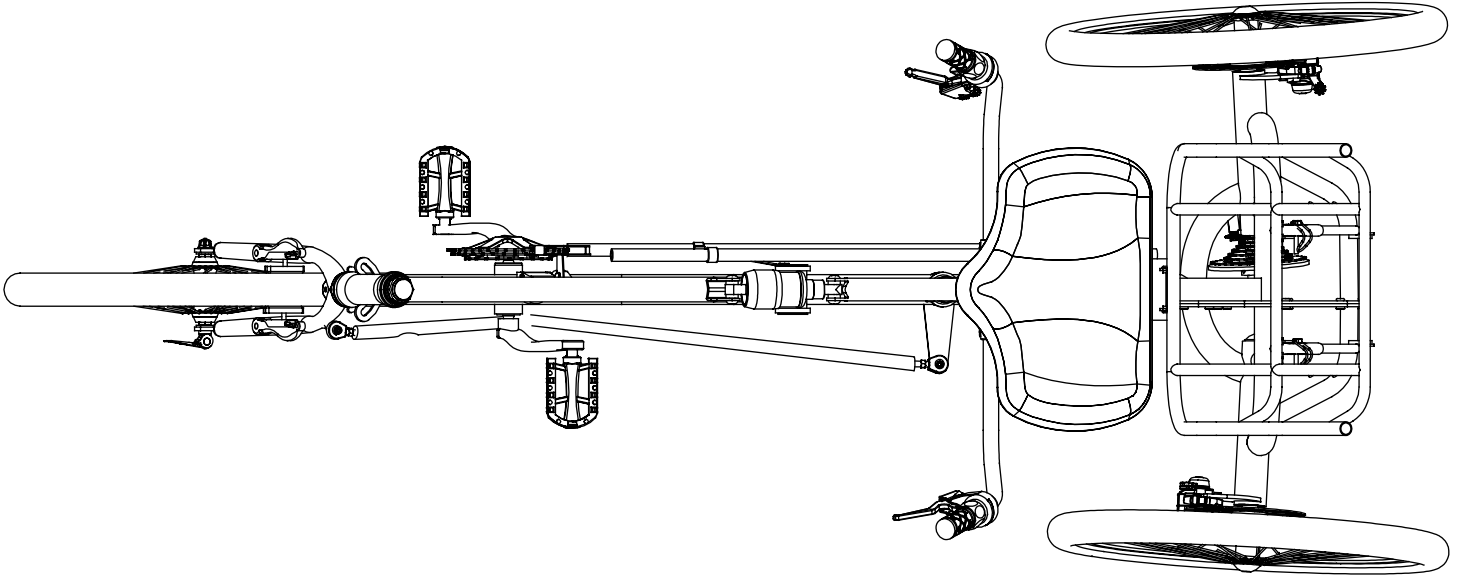
Steering Link Installation

Install front joint of #10 Steering Link onto front fork steering tab. Position the #10 Steering Link with bent portion below bottom bracket to avoid interference with chainrings or pedals. See Figure H.

Install rear joint of #10 Steering Link onto handlebar stem steering tab. See Figure I.



Check that the handlebars and front wheel are aligned perpendicular to each other for proper steering control. If adjustments are needed, they can be made using the threaded joints on either end of the #10 Steering Link. These joints may be turned accordingly to either shorten or lengthen the #10 Steering Link to help straighten the front wheel position.



Adjust #10 Steering Link by removing the steering link joint at the front fork steering tab. Turn steering link joint in or out to shorten or lengthen the #10 Steering Link. This adjustment will help straighten the front wheel position.

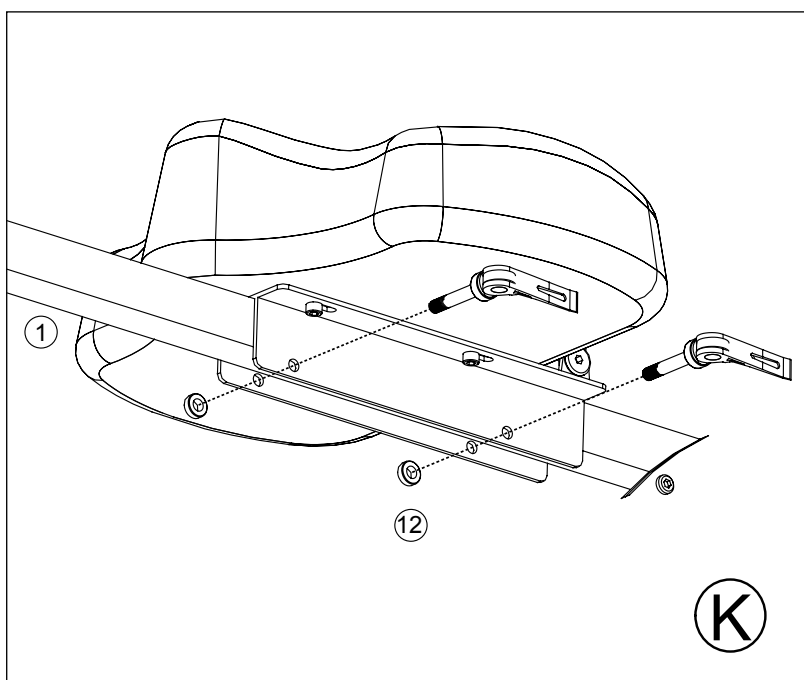
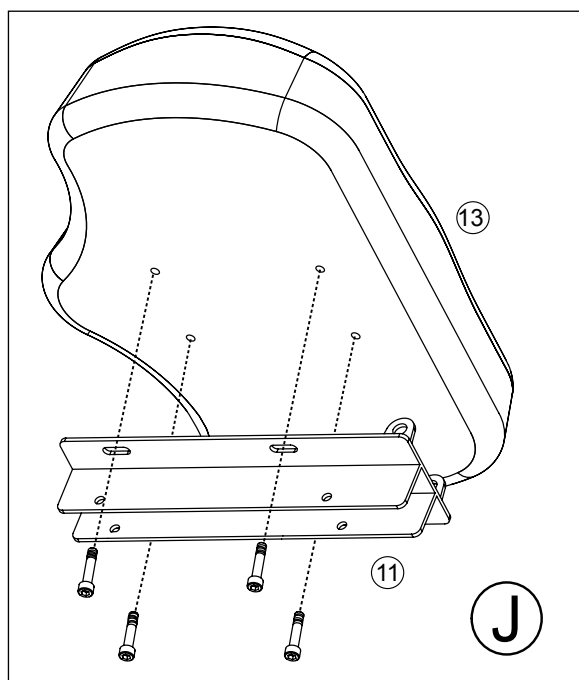
Use locknuts to secure steering link joints. Secure steering link to front fork steering tab after adjustments. See Figure H, I.

WARNING: Make sure once you have made all your steering link adjustments that you do not have any crank or frame interference with the steering link. Failure to do so may result in loss of control resulting in a serious or fatal accident.

Saddle Assembly Installation

Install #11 Seat Mount to bottom of #13 Saddle with seat back frame tabs to rear of saddle. See Figure J.

Install #11 Seat Mount onto #1 Main Frame Assembly and secure with #12 Seat Mount Hardware Set. See Figure K.



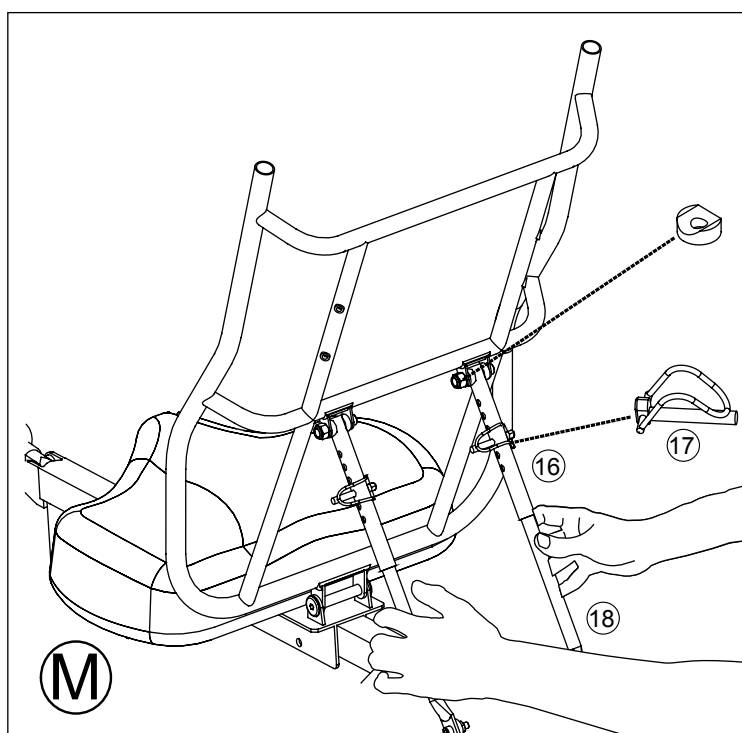
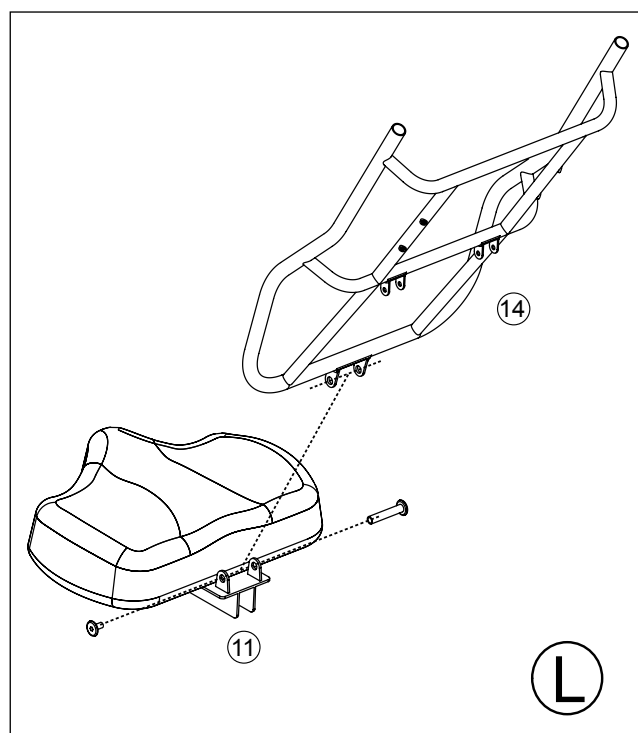
Install #14 Seat Back Frame to #11 Seat Mount using provided large pivot bolt. See Figure L.

Install #16 Upper Seat Struts and ½ moon washers into the rear tabs on the #14 Seat Back Frame using the #19 Seat Strut Hardware Set.

Install #18 Lower Seat Struts onto the rear tabs of the Main Frame and Rear Unit Assembly, adding #20 Seat Strut Tab Brace. Use front tabs for shorter riders, rear tabs for taller riders. See Figure N.

Insert the lower struts into the upper struts and use #17 Strut Pins to secure the struts. See Figure M.

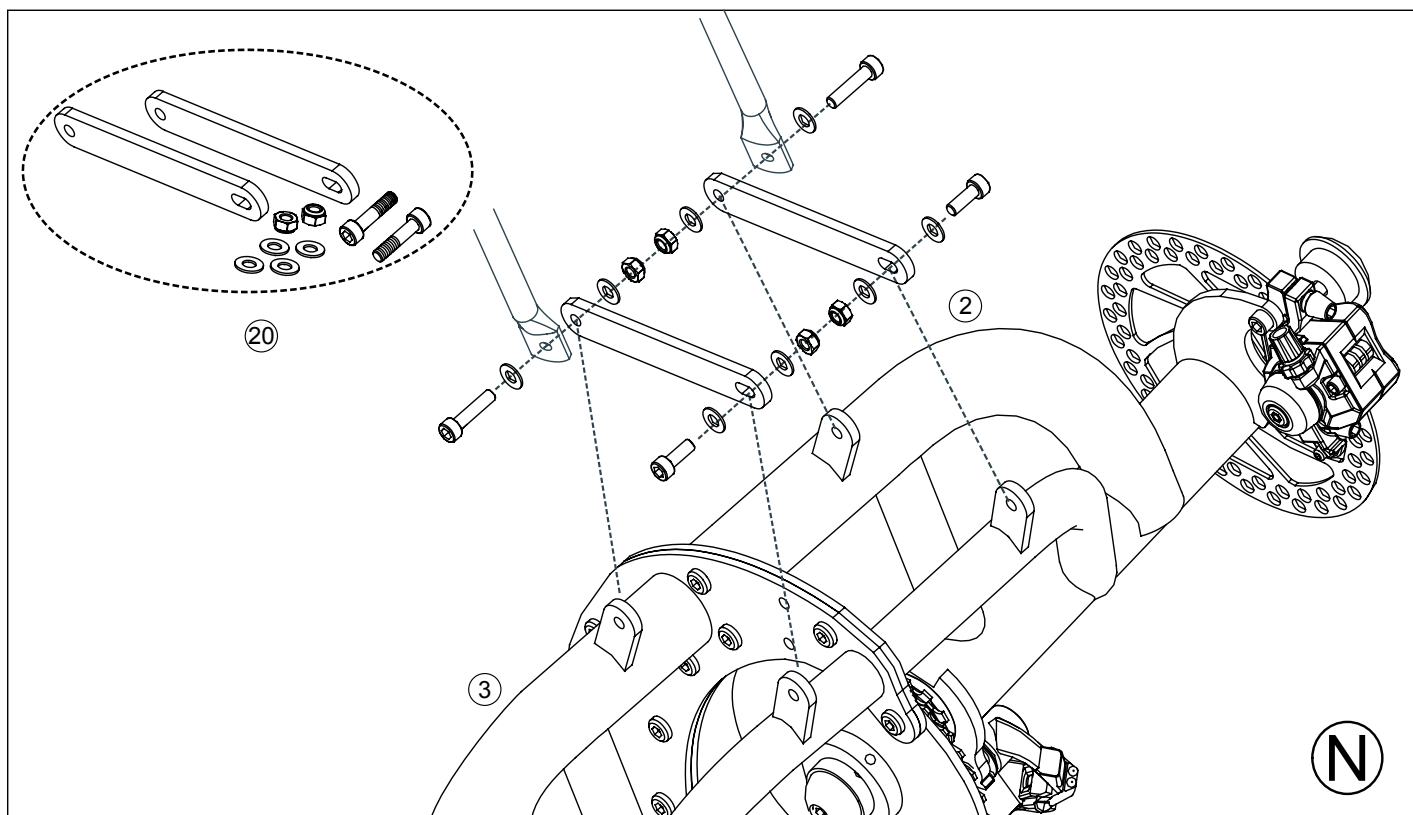
Install #15 Seat Mesh over #14 Seat Back Frame by first inserting upper posts of Seat Back Frame into stitched pockets at top of seat mesh, then by wrapping bottom of seat mesh beneath bottom of seat back frame and buckling its nylon clips behind seat back frame.



Seat Strut Tab Brace Installation

Install #20 Seat Strut Tab Brace onto the rear tabs of the Main Frame and Rear Unit Assembly.

Install #18 Lower Seat Strut on top of this brace on either seat strut tab, based on rider fit. See Figure N.

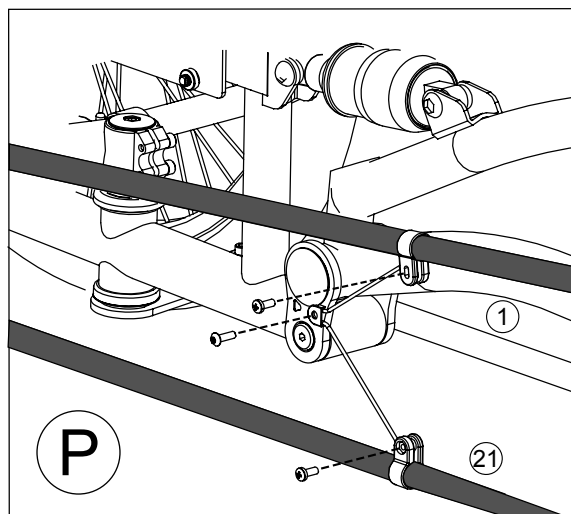
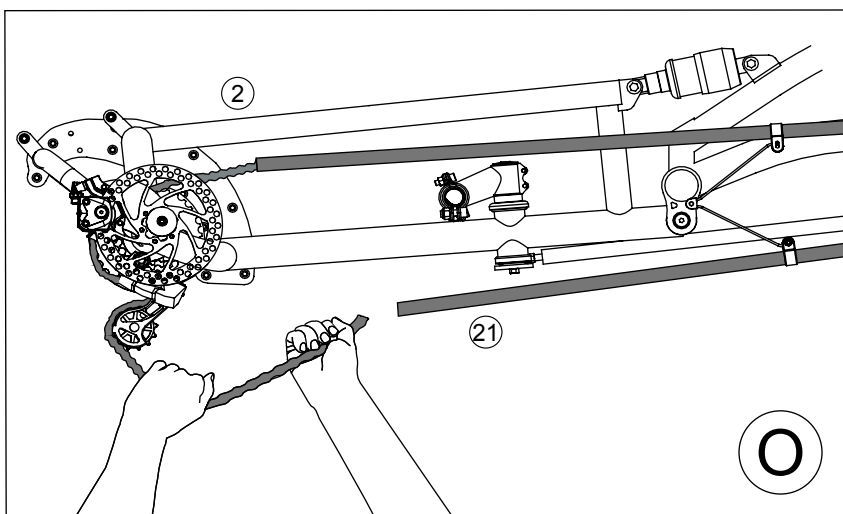


Chain Tube Assembly Installation

Insert chain into lower #21 Chain Tube Assembly, moving toward front of recumbent. Position lower chain tube beneath handlebars, route chain beneath and over front chainring, through front derailleur and into upper #21 Chain Tube Assembly, now moving toward rear of recumbent.

With the open chain pin now captured in bottom chain tube and chain routed properly around crank, position top chain tube above handlebars. Route chain over freewheel and through rear derailleur, join chain at open chain pin. See Figure O.

Install #21 Chain Tube Assembly to #1 Main Frame at frame pivot bolt using supplied hardware and spring. Position chain tubes to avoid interference with chainrings and front derailleur. See Figure P.

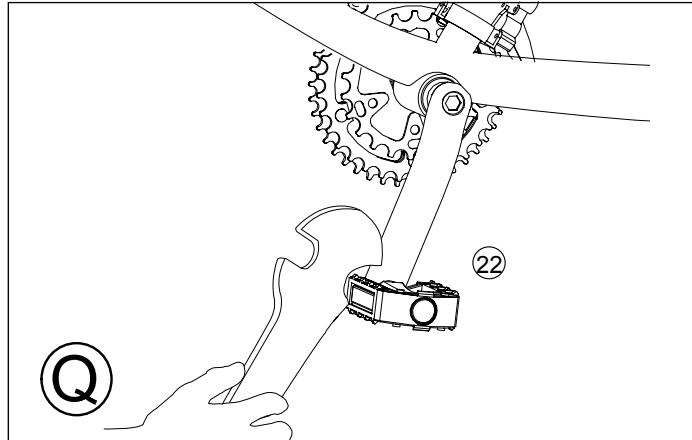


Pedal Installation

Apply grease to the threads of the #22 Pedals. This will protect the threads of the pedal and the crank arm. Use pedal washers where required. Using your hands, thread the #22 Pedals (marked for L or R) into the respective left or right crank arms by turning them toward the front of the bike.

Once the threads catch, use your pedal wrench to finish tightening down the pedals. See Figure Q.

Tighten the pedals to a minimum of 34Nm (300 in-lbs.) of torque.

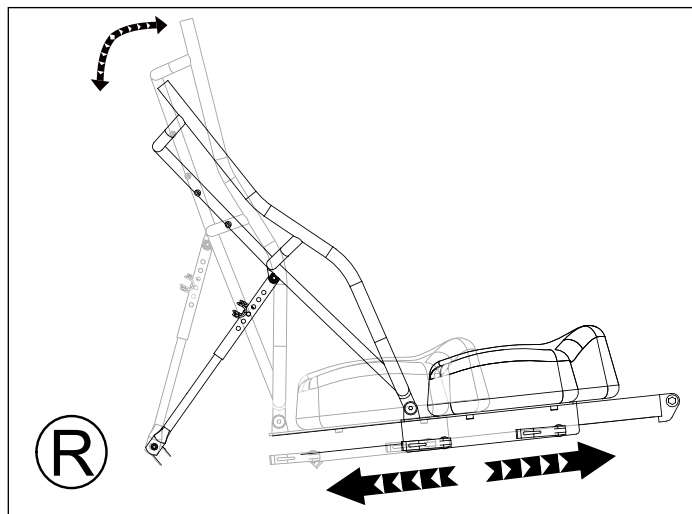


Seat Adjustment

Loosen the #12 Seat Mount Quick Release and slide the #11 Seat Mount rearward on the #2 Rear Unit Right Side Assembly until in a comfortable seating position. Adjust the seat angle by removing and reinstalling the #17 Seat Strut Pins into a new position on the seat struts if necessary.

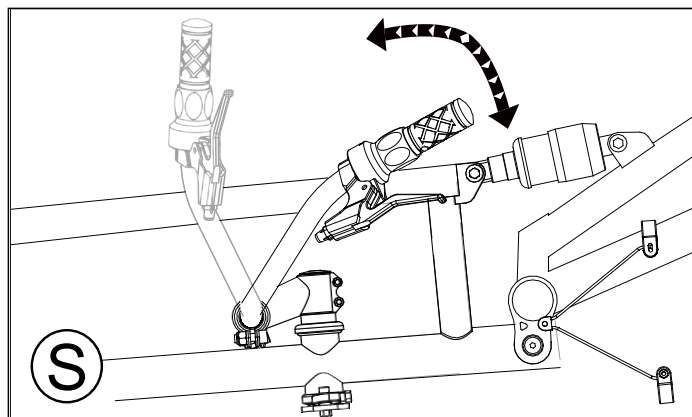
Position the #14 Seat Frame Assembly so that when seated, your knee is slightly bent when the forward foot is in the farthest pedal position.

If you cannot extend your leg forward enough you can move the seat back frame forward to get the proper fit. Adjust #14 Seat Frame Assembly for comfort. See Figure R.



Handlebar Adjustment

#8 / #9 Handlebar assemblies can be rotated up or down at the stem faceplate for desired comfort. Once handlebar position is set you can now adjust the brake and shift controls for comfort. See Figure S.



WARNING: Make sure once you have made all your handlebar, stem and control adjustments that you do not have any leg, knee or tire interference with the handlebar or controls. Failure to do so may result in loss of control resulting in a serious or fatal accident.



Sun Seeker Bicycles
PO Box 161859, Miami, FL 33116-1859
info@sunseeker.bike