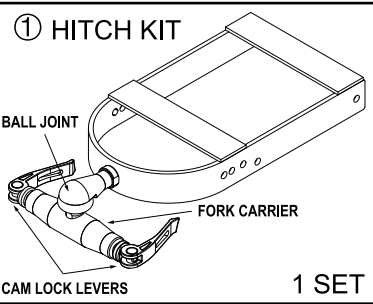
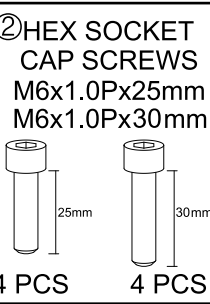


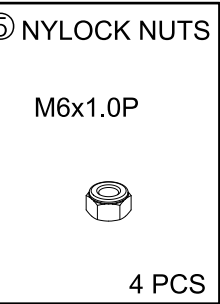
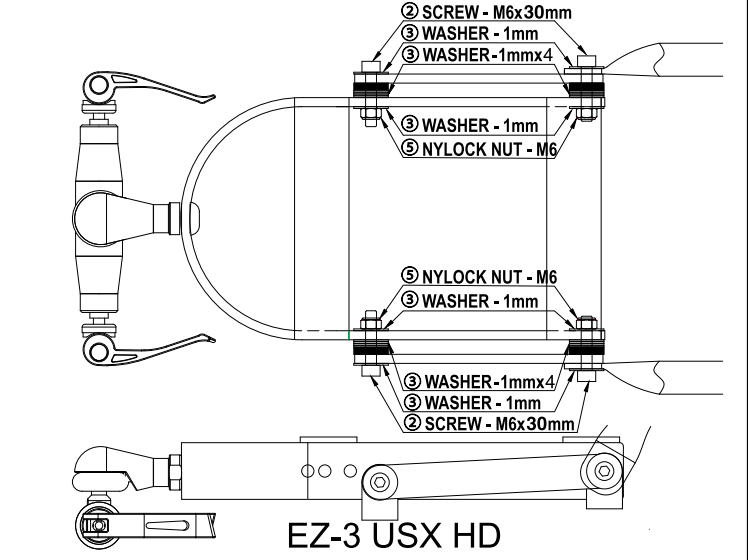
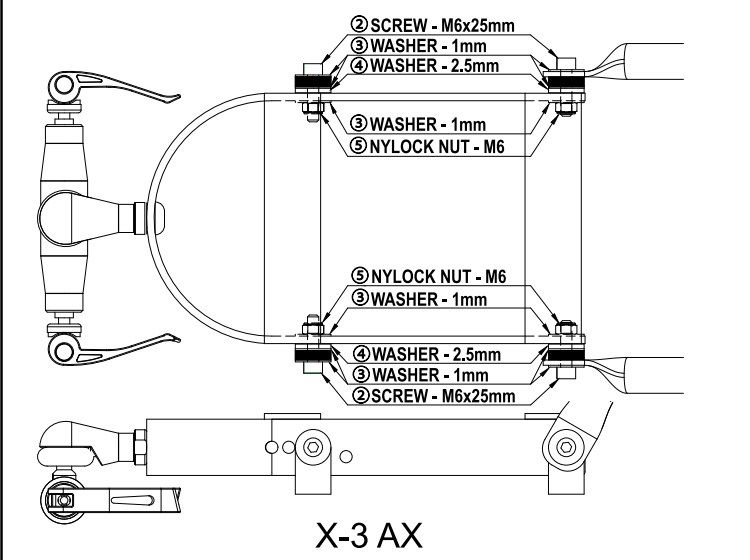
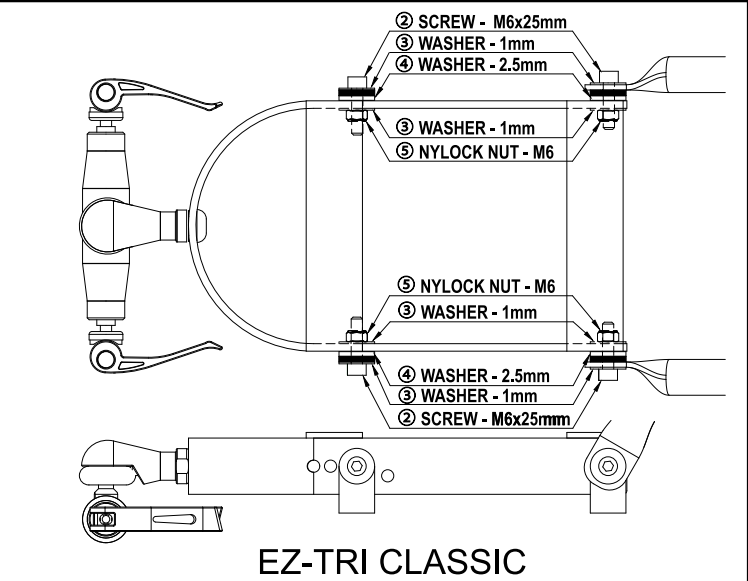
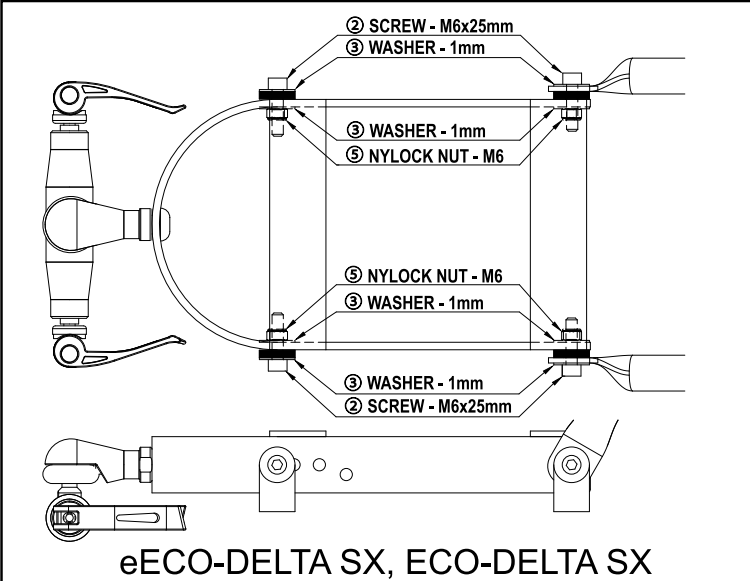


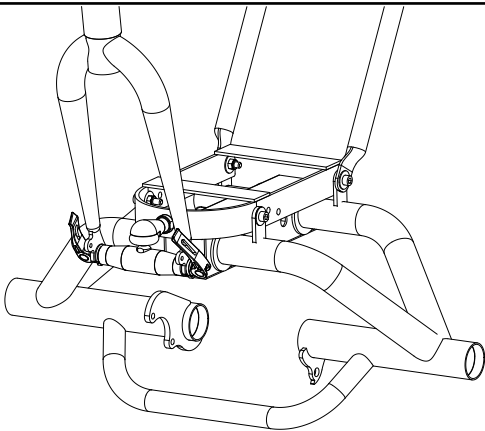
# 671166 HITCH KIT ASSEMBLY INSTRUCTIONS

Rev. 1 2023

PARTS LIST	① HITCH KIT	② HEX SOCKET CAP SCREWS M6x1.0Px25mm M6x1.0Px30mm	③ THIN WASHERS Ø19xØ6x1mm	④ THICK WASHERS Ø19xØ6x2.5mm	⑤ NYLOCK NUTS M6x1.0P
	 BALL JOINT FORK CARRIER CAM LOCK LEVERS 1 SET	 25mm 30mm 4 PCS4 PCS	 24 PCS	 8 PCS	 4 PCS

## Assembly options by model:





1. Install Hitch Kit onto rear unit tabs using only hardware provided in kit.
2. Install the fork onto the fork carrier, tighten both cam lock levers per #3.
3. Adjusting the action of the cam lock lever mechanism:  
The secondary trike fork is secured to the hitch accessory by the clamping force of the left and right cam lock levers against its left and right dropouts.  
The amount of clamping force is controlled by the cam lever, see illustration below.  
Rotating each CAM LEVER clockwise while in the OPEN or ADJUST position increases clamping force. Less than half a turn of the cam lever can make the difference between safe clamping force and unsafe clamping force.  
Make fine adjustments until both CAM LEVERs are secure. Ask your bike shop to help determine the proper tension.  
Once adjusted properly close both CAM LEVERs to the CLOSED position.

**WARNING:** The full clamping force of both CAM LEVERs is needed to clamp the secondary trike fork securely. The clamping force of a correctly secured cam lever must emboss the surfaces of the dropouts on the secondary trike fork.

**WARNING:** This Sunseeker hitch accessory is designed for Sunseeker brand delta style recumbent trikes and its intended use is only for towing delta style recumbent or traditional adult trikes.

**WARNING:** Towing a trike can be dangerous to both riders. Excessive speed can cause instability, especially in turns. Braking can be impacted do to the extra weight of the second trike and rider.

**WARNING:** Towing an improperly secured trike on this hitch accessory can allow the secondary trike to wobble or disengage from the primary trike, resulting in injury or death to the secondary rider and potential loss of control leading to injury or death to the primary rider as well.

To prevent serious injury or death it is essential that you:

1. Ask your dealer to help you make sure you know how to install and remove the trike you are towing.
2. Understand and apply the correct technique for securing the secondary trike fork to the accessory hitch.
3. Inspect the accessory hitch and secondary trike fork attachment before each ride to check that its fork is securely clamped and that the accessory hitch is secured to the primary trike and in good working order.
4. Inspect both primary and secondary trikes are in good working order.

